



# Nogo A Polyclonal Antibody

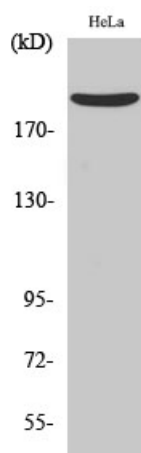
<b>Catalog No</b>	YP-Ab-12774
<b>Isotype</b>	IgG
<b>Reactivity</b>	Human;Mouse;Rat
<b>Applications</b>	WB;IHC;IF;ELISA
<b>Gene Name</b>	RTN4
<b>Protein Name</b>	Reticulon-4
<b>Immunogen</b>	The antiserum was produced against synthesized peptide derived from human Nogo A. AA range:450-499
<b>Specificity</b>	Nogo A Polyclonal Antibody detects endogenous levels of Nogo A protein.
<b>Formulation</b>	Liquid in PBS containing 50% glycerol, 0.5% BSA and 0.02% sodium azide.
<b>Source</b>	Polyclonal, Rabbit,IgG
<b>Purification</b>	The antibody was affinity-purified from rabbit antiserum by affinity-chromatography using epitope-specific immunogen.
<b>Dilution</b>	WB: 1/500 - 1/2000. IHC: 1/100 - 1/300. ELISA: 1/10000.. IF 1:50-200
<b>Concentration</b>	1 mg/ml
<b>Purity</b>	≥90%
<b>Storage Stability</b>	-20°C/1 year
<b>Synonyms</b>	RTN4; KIAA0886; NOGO; My043; SP1507; Reticulon-4; Foccen; Neurite outgrowth inhibitor; Nogo protein; Neuroendocrine-specific protein; NSP; Neuroendocrine-specific protein C homolog; RTN-x; Reticulon-5
<b>Observed Band</b>	220kD
<b>Cell Pathway</b>	[Isoform A]: Endoplasmic reticulum membrane ; Multi-pass membrane protein . Cell membrane; Multi-pass membrane protein ; Cytoplasmic side . Anchored to the membrane of the endoplasmic reticulum (ER) through 2 putative transmembrane domains. Localizes throughout the ER tubular network (PubMed:27619977). Co-localizes with TMEM33 at the ER sheets. . ; [Isoform B]: Endoplasmic reticulum membrane ; Multi-pass membrane protein . Cell membrane ; Multi-pass membrane protein ; Extracellular side . Cell junction . Mainly located on endoplasmic reticulum tubules and sheet edges (PubMed:27786289). Upon ICAM1 engagement, redistributed toward endothelial junctions where interacts with CDH5 (PubMed:21183689). . ; [Isoform C]: Endoplasmic reticulum membrane ; Multi-pass membrane protein .
<b>Tissue Specificity</b>	Isoform A: is specifically expressed in brain and testis and weakly in heart and skeletal muscle. Isoform B: widely expressed except for the liver. Highly expressed in endothelial cells and vascular smooth muscle cells, including blood vessels and mesenteric arteries (PubMed:15034570, PubMed:21183689). Isoform C: is expressed in brain, skeletal muscle and adipocytes. Isoform D is testis-specific.



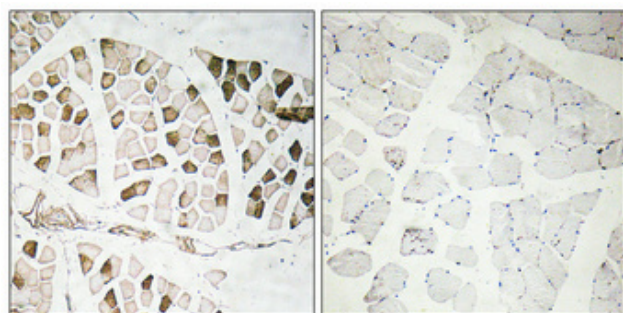
<b>Function</b>	<p>domain: Three regions, residues 59-172, 544-725 and the loop 66 amino acids, between the two transmembrane domains, known as Nogo-66 loop, appear to be responsible for the inhibitory effect on neurite outgrowth and the spreading of neurons. This Nogo-66 loop, mediates also the binding of RTN4 to its receptor.</p> <p>function: Potent neurite growth inhibitor in vitro and plays a role both in the restriction of axonal regeneration after injury and in structural plasticity in the CNS. Isoform 2 reduces the anti-apoptotic activity of Bcl-xl and Bcl-2. This is likely consecutive to their change in subcellular location, from the mitochondria to the endoplasmic reticulum, after binding and sequestration. Isoform 2 and isoform 3 inhibit BACE1 activity and amyloid precursor protein processing.</p> <p>online information: Nerve regrowth: nipped by a no-go - Issue 69 of April 2006, online information: The Singapore hu</p>
<b>Background</b>	<p>This gene belongs to the family of reticulon encoding genes. Reticulons are associated with the endoplasmic reticulum, and are involved in neuroendocrine secretion or in membrane trafficking in neuroendocrine cells. The product of this gene is a potent neurite outgrowth inhibitor which may also help block the regeneration of the central nervous system in higher vertebrates. Alternatively spliced transcript variants derived both from differential splicing and differential promoter usage and encoding different isoforms have been identified. [provided by RefSeq, Jul 2008],</p>
<b>matters needing attention</b>	Avoid repeated freezing and thawing!
<b>Usage suggestions</b>	This product can be used in immunological reaction related experiments. For more information, please consult technical personnel.



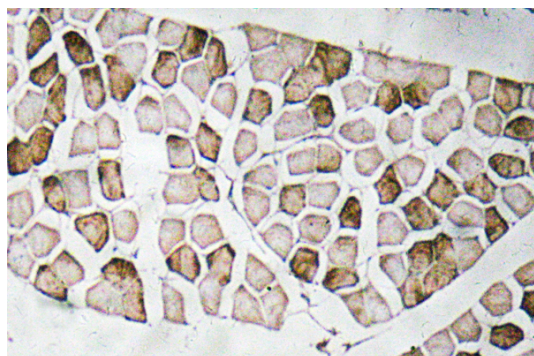
## Products Images



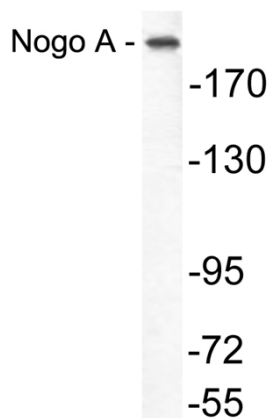
Western Blot analysis of various cells using Nogo A Polyclonal Antibody



Immunohistochemical analysis of paraffin-embedded Human skeletal muscle. Antibody was diluted at 1:100(4° overnight). High-pressure and temperature Tris-EDTA, pH8.0 was used for antigen retrieval. Negative contrl (right) obtained from antibody was pre-absorbed by immunogen peptide.



Immunohistochemistry analysis of Nogo A antibody in paraffin-embedded human skeletal muscle tissue.



Western blot analysis of lysate from COLO205 cells, using Nogo A antibody.